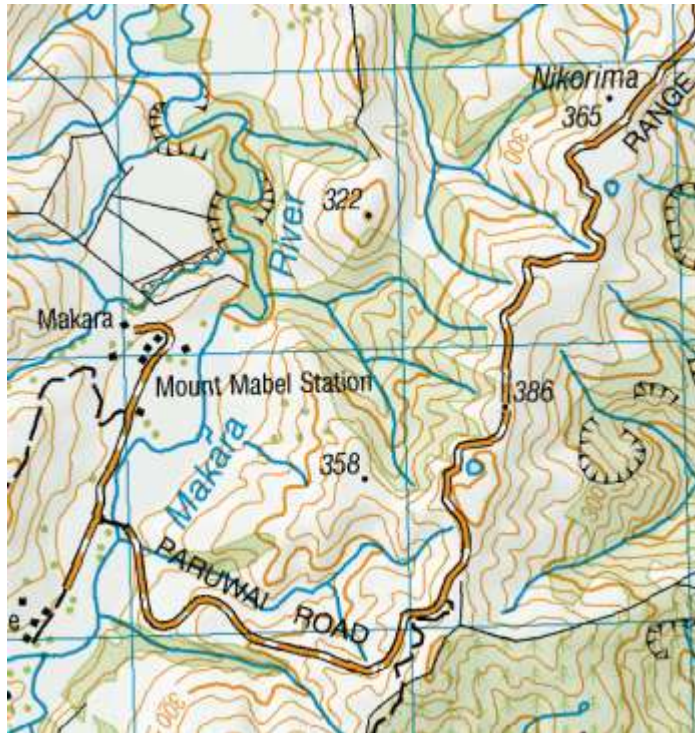


## Paruwai (Mt Mabel)



## 1954

26<sup>th</sup> March Closing of Paruwai School (Mount Mabel)

For your information Paruwai (Mount Mabel) was established as a grade 1 school in 1952 to cater for 8 or 9 students coming from 3 families in the Paruwai Settlement. This school is located

approximately 18 Miles from Martinborough and is conducted in a whare made available by a Mr. Webber

Tuturumuri is on a different road from Paruwai also 18 miles from Martinborough it would appear that the two settlements are from 5 to 7 miles apart by road and here any change would mean the Paruwai children are to be transported to Tuturumuri