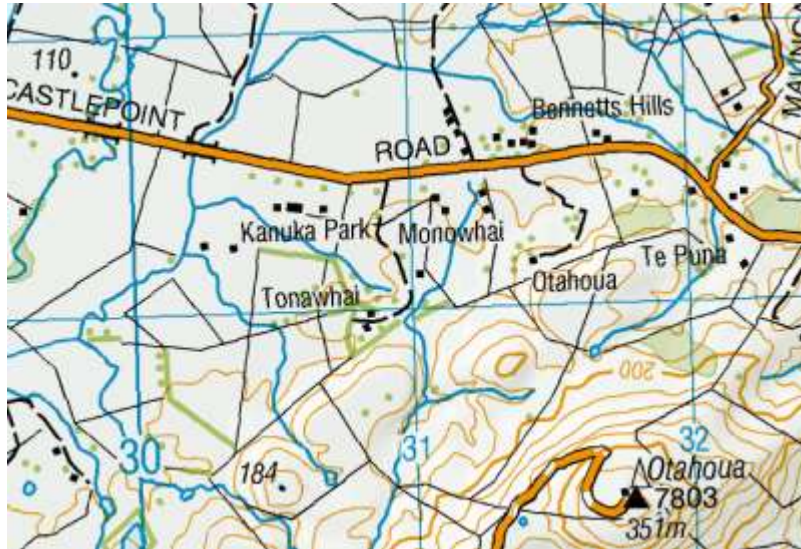


Otahoua: 1887 School was open for 1 year on a farm on the Castlepoint Road owned in 2012 by Masterton Deputy Mayor Jane Terpstra and her husband. 7 Kilometres East on Masterton Castlepoint Road



Otahoua-

Plan for school room 22' x 16' Porch 8.0 x 4.6

1st November 1887 Voucher and cheque for £9 being capitation for September quarter

2nd April 1887 Approves the appointment of Miss Watson to your school. If you can with her assistance furnish the requisite returns for the past quarter

24th June 1887 Will you see that the requisite monthly and quarterly rules Unless this is done at the end of each month and quarter respectively I cannot ... the capitation allowance.

Your teacher should refer with another teacher into filling up these forms.

15th August 1887 I expect the maps will be here during the week and therefore hope to send to you a parcel for the aided school at Otahoua by early train on Saturday

Wellington Education Board give 2 pounds for vaccination. compulsory vaccination probably for smallpox. There was a vaccination inspector

11th April 1888

| | Presented | Passed | Failed | |
|------------|-----------|--------|--------|--|
| Standard 4 | 1 | | 1 | |
| Standard 3 | 1 | 1 | | |
| Standard 2 | 2 | 2 | | |
| Standard 1 | 2 | 2 | | |
| Primers | 3 | | | |

Class Subjects out of 100

History 50

Geography 50

Elementary Science 20

Total 120

Percentage 40

Other subjects

Repetition and recitation 20/20

Drill and exercises 10

Singing 5

Needlework 20

Subject manner of reading lessons 15

The working condition of the school is satisfactory

The candidate for standard 4 has been very ill

1st November 1887 Voucher and cheque for £9 being capitation for September quarter

2nd April 1887 Approves the appointment of Miss Watson to your school. If you can with her assistance furnish the requisite returns for the past quarter

24th June 1887 Will you see that the requisite monthly and quarterly rules Unless this is done at the end of each month and quarter respectively I cannot ... the capitation allowance.

Your teacher should refer with another teacher into filling up these forms.

15th August 1887 I expect the maps will be here during the week and therefore hope to send to you a parcel for the aided school at Otahuoa by early train on Saturday

All Material From Wairarapa Archives

Architects plans of school are at Wairarapa Archives.

1887 9 Otahuao Watson Ellen L