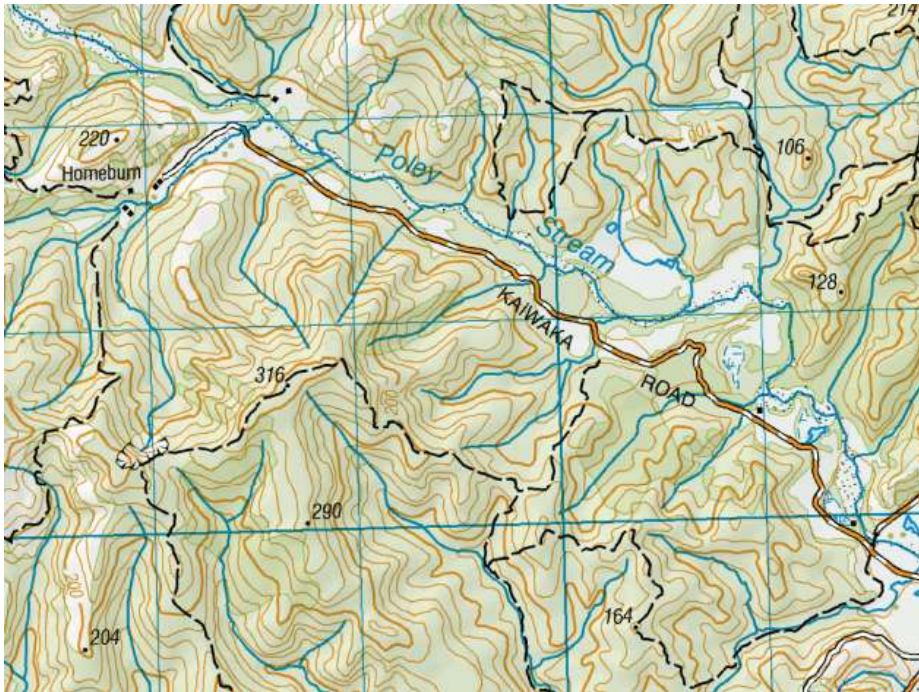


Homeburn

1. Homeburn: 1909 One year wonder on border of Aorangi National Park in South West area of Wairarapa. Off White Rock Road from Martinborough

1907		Homeburn	Closed				
1909	4	Homeburn	McIntyre	Mary	Female	£24	



Mr T O Haycock was farmer owner in 1909. Haycock's were involved with other schools in this area including, Cape Palliser, Tukurumuri and Rough Hill

26th November 1909 Application for works at Homeburn School declined PP

23rd March 1910 Board Annual Report included new school opened at Homeburn in 1909