

Glendonald

Established 1928

Closed 1931

Glendonald: 1928-1931 After Bideford school closed down after trouble with a teacher, a school was opened in the shearing sheds of Glendonald Station. A school was built on the site, not the site of the previous school and was renamed Bideford School in 1931.

25th August 1928 Miss A. Jeffries, sole teacher, Glendonald PP

10th July 1929 out of the Wairarapa Schools, Wairongomai,

Rongomai, Hinemoa, and Glendonald have sent in collections which are above the average Winter Show Exhibit PP

4th March 1930 Miss EE McKay Sole Teacher Glendonald. PP

Writing in Tempus Sans ITC is from items at National Archives Wellington

19th May 1928 Letter from A N Burns inspector

I visited the school yesterday In the vicinity of the school there are only 3 children (Corletts) Three others (Falloon) are within a mile. But the father finds it more convenient to send them to boarding school.

All the other children are two to six miles away to the North. The parents there are prepared to provide a suitable room in a central position at Glendonald. No expense in connection with this building would be incurred by the Wellington Education Board

There is no possibility of arranging conveyance to Bideford.

The suggestion made by the settlers that a teacher should live at the Bideford Residence and travel daily to Glendonald (3 1/2 miles) is I think not a good one and moreover it is now not necessary as very good accommodation is available at Glendonald.

I have therefore to recommend that a school be established at Glendonald. 12 pupils within 2 1/2 miles of this school. The three children at Bideford are 3 1/2 miles from Glendonald but it is almost certain that they will be able to attend. In view of the fact that the children in this district have not been at school for a year it is advisable that Glendonald school be opened at once under a temporary teacher .

6th June 1928. Advising director of Education that the Glendonald School will be opened next Monday 14th inst.

9th May 1930 Letter to the Director of Education.

The Bideford School no longer serves the population. Wangaehu has been reopened on the Masterton side. And Glendonald has for

some time served as a temporary school provided with accommodation in a woolshed.

The Masterton County Council while unable legally to sell to the Board is quite happy that the Board should take land under the Public Works Act an area of 3 1/2 acres at the price which is taken for the land £25 per acre.

The architect is of the opinion that the Bidford School although rather old could be moved to the new site.

This work is very necessary as during the shearing time the school has to close.

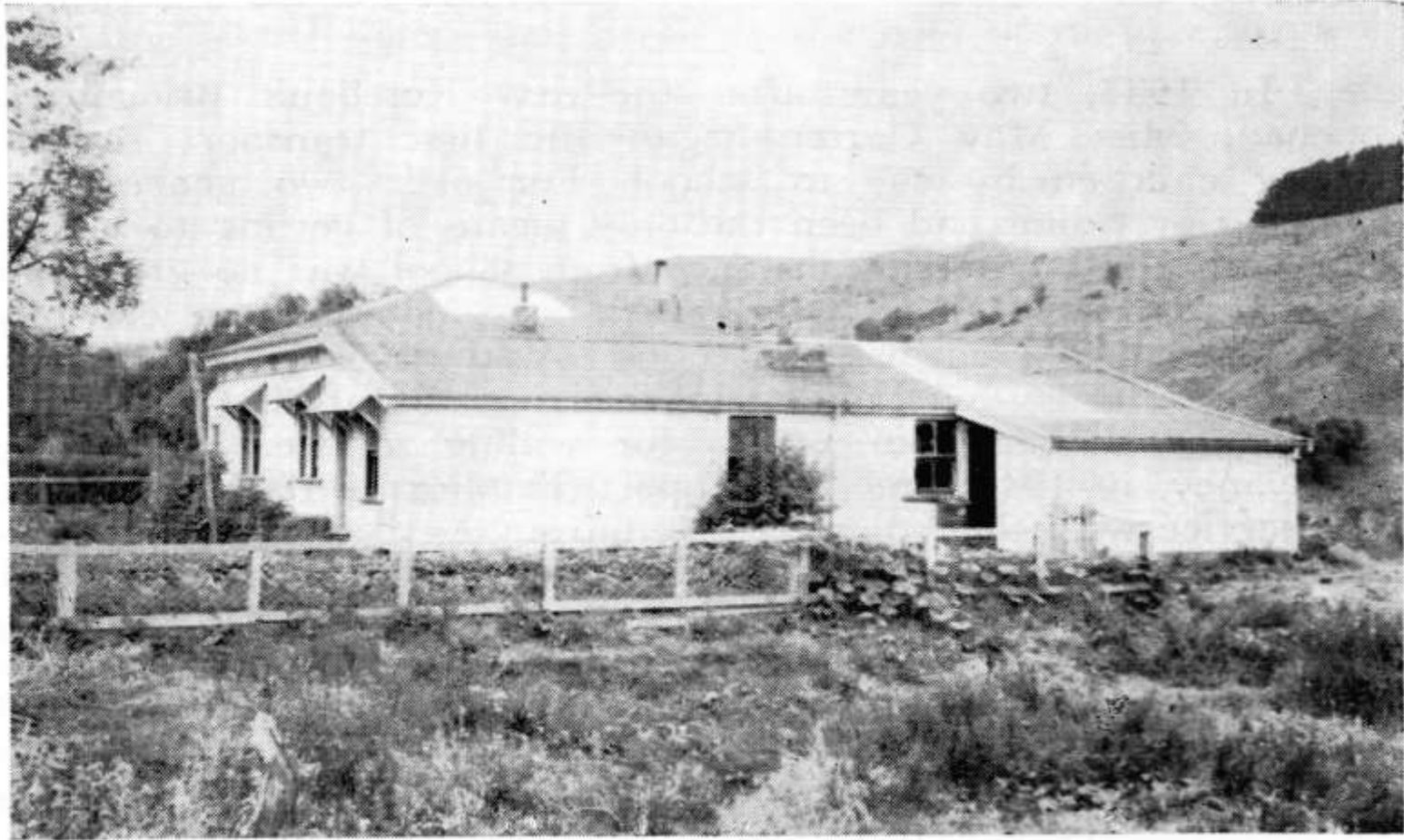
17th November. I have to advise you that a grant of £ 183 has been approved to enable your Board to remove the Bidford School to the new site at Glendonald.

25th August 1931, I have to notify you that the Board has acceded to the request of the local people for the changing of the name of Glendonald to that of Bidford School

12th October 1931. With reference to a total cost of job was £296.17 but the grant was only £183. Would you please explain

5th November 1931. I have to acknowledge receipt of your letter for the removal of the building from Bidford. The matter of excess will be further discussed at the annual adjustment of building grants





GLENDONALD SCHOOL, 1928-31